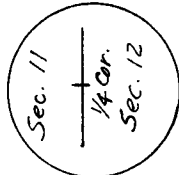


**CERTIFIED LAND CORNER RECORDATION**

T-14-N, R66W

DESCRIPTION OF CORNER EVIDENCE FOUND, AND ORIGINAL RECORD (If known)

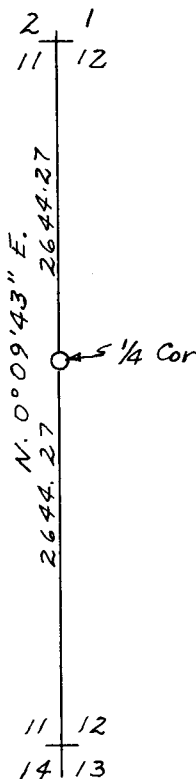


No evidence of the original monument found. Set a 1 1/2" Iron Pipe with Aluminum Cap marked 1/4. Location determined by single proportion measurement.

DESCRIPTION OF MONUMENT AND ACCESSORIES ESTABLISHED TO PERPETUATE THE ORIGINAL LOCATION OF THIS CORNER:

Set a 1 1/2" Iron Pipe with Aluminum Cap marked 1/4 as the re-established Corner.

SKETCH, WITH COURSE AND DISTANCE TO ADJACENT CORNER IF DETERMINED IN THIS SURVEY.  
(May Sketch or Paste Reproduction on Reverse Side.)



I, Edward C. Fry certify that I have carefully performed ~~or reviewed~~ the work done on the diagrammed corner as reported on this recordation form and approve the same.

Edward C. Fry P.E., L.S. 662  
Signature of Surveyor Registration No.

STATE OF WYOMING,  
Office of Clerk and Recorder,  
County of Saramie

**576601**

This "corner record" was filed for record on the 30 day of April, 19 80, was noted on the cross-index plat and is assigned page No. \_\_\_\_\_, in book No. \_\_\_\_\_.

James C. Whitehead  
County Official

Cross Index No.	T. _____	R. _____	Mer.
	<u>G-21</u>	<u>14</u>	<u>66</u>
	T. _____	R. _____	Mer.
	T. _____	R. _____	Mer.
	T. _____	R. _____	Mer.
	T. _____	R. _____	Mer.
	T. _____	R. _____	Mer.